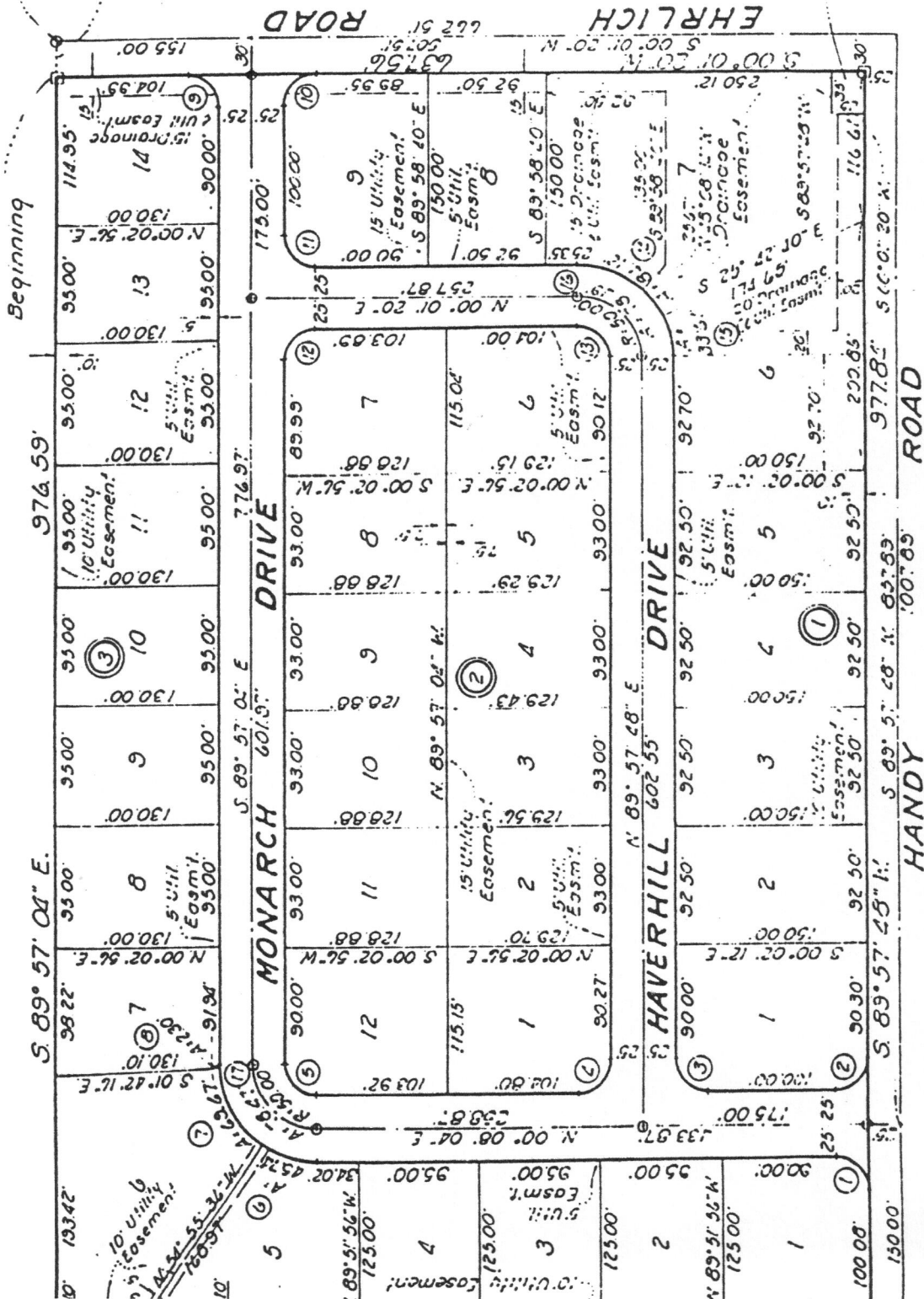


EXHIBIT "A"

of the Southeast 1/4 of Section 4
Township 28 South, Range 10 E.
N. 89° 57' 04" W.
3000'

35 x 25
Pumping station site to be
dedicated to Hillsborough
County, Florida



DESCRIPTION: From the Northeast corner of the Northeast 1/4 of the Southeast 1/4 of Section 4, Township 28 South, Range 10 East, Hillsborough County, Florida; run along the North boundary line of the Southeast 1/4 of said Section 4, N. 89° 57' 04" W., 3000 feet to a Point of Beginning; thence along the West right-of-way line of Ehrlich Road, S. 00° 01' 20" W., 637.56 feet; thence along the North right-of-way line of Handy Road, S. 89° 57' 04" W., 976.59 feet; thence along the West boundary line of the East 1/4 of the North 1/2 of the Northeast 1/4 of the Southeast 1/4 of said Section 4, N. 00° 08' 04" E., 639.02 feet; thence along the North boundary line of the Northeast 1/4 of the Southeast 1/4 of said Section 4, S. 89° 57' 04" E., 976.59 feet to the Point of Beginning. Containing 14.32 acres, more or less.